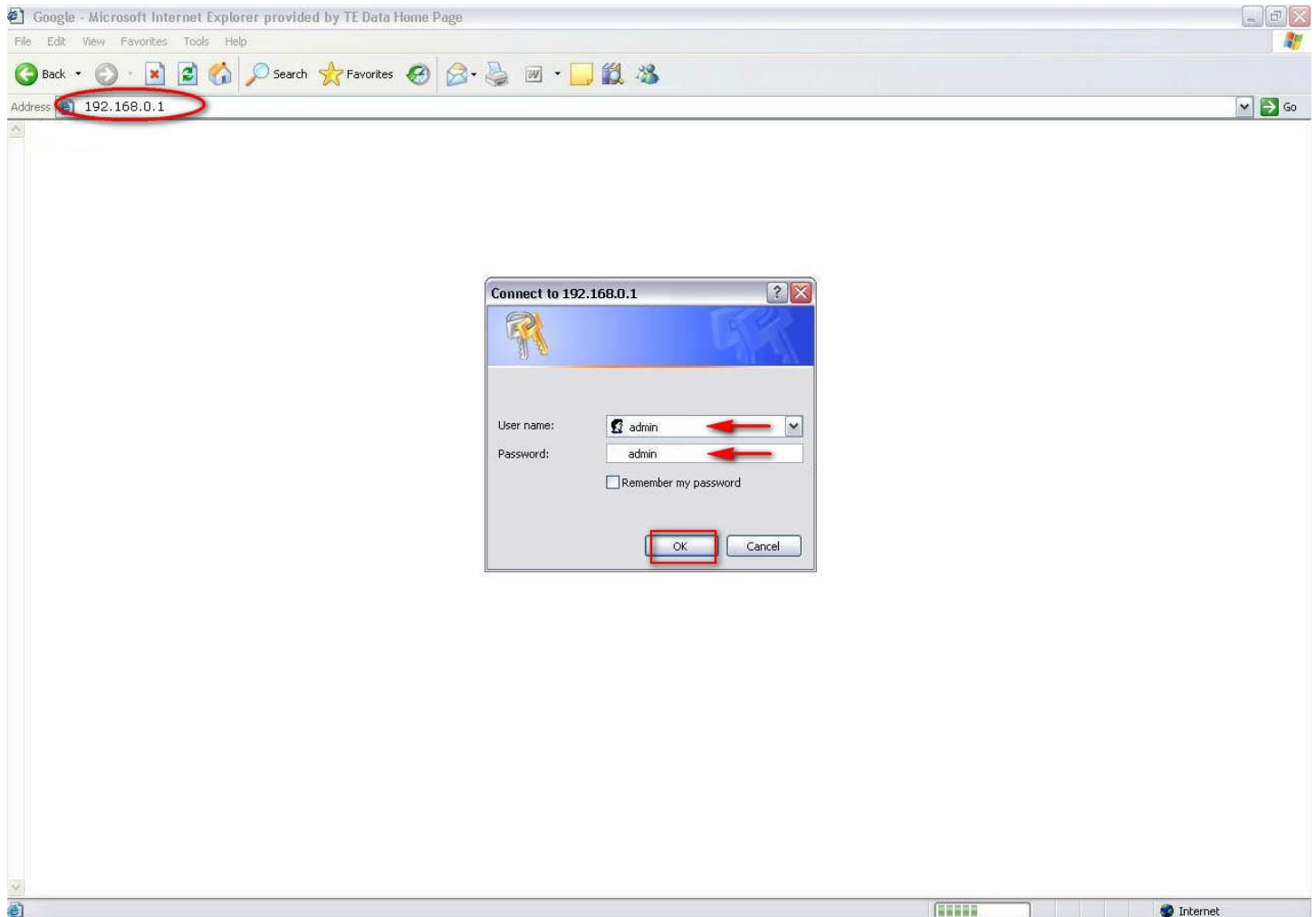


## How To Setup Linksys Router [Static Configuration]



- Login into the router with **192.168.0.1** or **192.168.1.1**
- The default Username: **admin**.
- The default password is: **admin**.

The screenshot displays the Linksys Wireless-G ADSL Gateway setup interface. The 'Setup' tab is selected, and the 'Basic Setup' sub-tab is active. The 'Internet Setup' section is expanded, showing the following configurations:

- Internet Setup:**
  - PVC Connection: 1
  - Enable Now:
  - Encapsulation: RFC 2516 PPPoE
  - Multiplexing:  LLC  VC
  - Qos Type: UBR
  - Pcr Rate: 0 cps
  - Scr Rate: 0 cps
  - Autodetect:  Enable  Disable
  - Virtual Circuit: 0 (VPI Range 0-255)
  - VCI: 35 (VCI Range 32-65535)
  - Service Name: tedata
  - User Name: username@tedata.net.eg
  - Password: \*\*\*\*\*
  - Connect on Demand:  Max Idle Time: 20 Min.
  - Keep Alive:  Redial Period: 20 Sec.
  - Second PPPoE: Disable
  - Host Name: [Empty]
  - Domain Name: [Empty]
  - MTU: Auto
  - Size: 1492
- Network Setup:**
  - Router IP:
    - Local IP Address: 81.10.13.12
    - Subnet Mask: 255.255.255.252
  - DHCP Server:  Enable  Disable  DHCP Relay
  - DHCP Server: [Empty]
  - Starting IP Address: 81.10.13.100
  - Maximum Number of DHCP Users: 50
  - Client Lease Time: 0 minutes (0 means one day)
  - Static DNS 1: [Empty]
  - Static DNS 2: [Empty]
  - Static DNS 3: [Empty]
  - WINS: [Empty]
  - Time Zone: (GMT-08:00) Pacific Time (USA & Canada)
  - Time Interval: 3600 seconds
  - Automatically adjust clock for daylight saving changes.

The 'Save Settings' button is highlighted with a red box at the bottom of the page.

- Click **Setup** and then select **Basic Setup** button.
- And then Select **Encapsulation: RFC 2516 PPPOE**.
- And then Select **Multiplexing: LLC**.
- And then Select **Qos: UBR**.
- And then Select **Auto detect: Disable**.
- And then Select **VPI: 0 VCI: 35**
- And your **Username** and **Password** .
- And then we write option pack **IP Address** and **Subnet Mask**.
- And will make **DHCP: Disable**.
- And Click **Save Settings**.

The screenshot displays the 'Setup' interface of a TE Data router. The top navigation bar includes 'Setup', 'Wireless', 'Security', 'Access Restrictions', 'Applications & Gaming', 'Administration', and 'Status'. Below this, a secondary bar shows 'Basic Setup', 'DHCP', 'MAC Address Clone', and 'Advanced Routing'. The left sidebar is titled 'Advanced Routing' and lists 'NAT', 'Dynamic Routing (RIP)', and 'Static Routing'. The main content area shows the 'NAT' configuration page. It features two radio buttons for 'Enabled' (selected) and 'Disabled'. Below this, there are two more radio buttons for 'Enabled' and 'Disabled', with 'Disabled' selected. The 'Route Entries' section includes a dropdown menu showing '1' and a 'Delete This Entry' button. Below are input fields for 'Enter Route Name:', 'Destination LAN IP:', 'Subnet Mask:', and 'Gateway:', each with a four-digit grid. The 'Interface' dropdown is set to 'LAN & Wireless'. A 'Show Routing Table' button is at the bottom. A blue sidebar on the right contains the text: 'This tab is used to set up the Router advanced functions. Operating Mode allows you to select the type(s) of advanced functions you use. More...'

- And from **Administration** then **Advanced Setup** you can modify **NAT** settings .